

REGENERATION:
Environment, Art, Culture

Legge, Andrea, and Refetoff, Osceola. "The Voyage Home." *Regeneration: Environment, Art, Culture* 2, no. 1-2 (2026): pp. 1-6. DOI: <https://doi.org/10.16995/regeneration.20339>

OH Open Library of Humanities

The Voyage Home

Andrea Legge, Artist, andreadlegge@gmail.com

Osceola Refetoff, Artist, Courtesy of Von Lintel Gallery, rx89@mac.com

A multimodal collaboration between artists, writers, and scholars. This piece emerged from an expedition to the Arctic archipelago as part of the Arctic Circle Residency in Autumn 2022.

[About The Voyage Home Artists](#)

Regeneration: Environment, Art, Culture is a peer-reviewed open access journal published by the Open Library of Humanities. © 2026 The Author(s). This is an open-access article distributed under the terms of the Creative Commons Attribution 4.0 International License (CC-BY 4.0), which permits unrestricted use, distribution, and reproduction in any medium, provided the original author and source are credited. See <http://creativecommons.org/licenses/by/4.0/>.

OPEN ACCESS



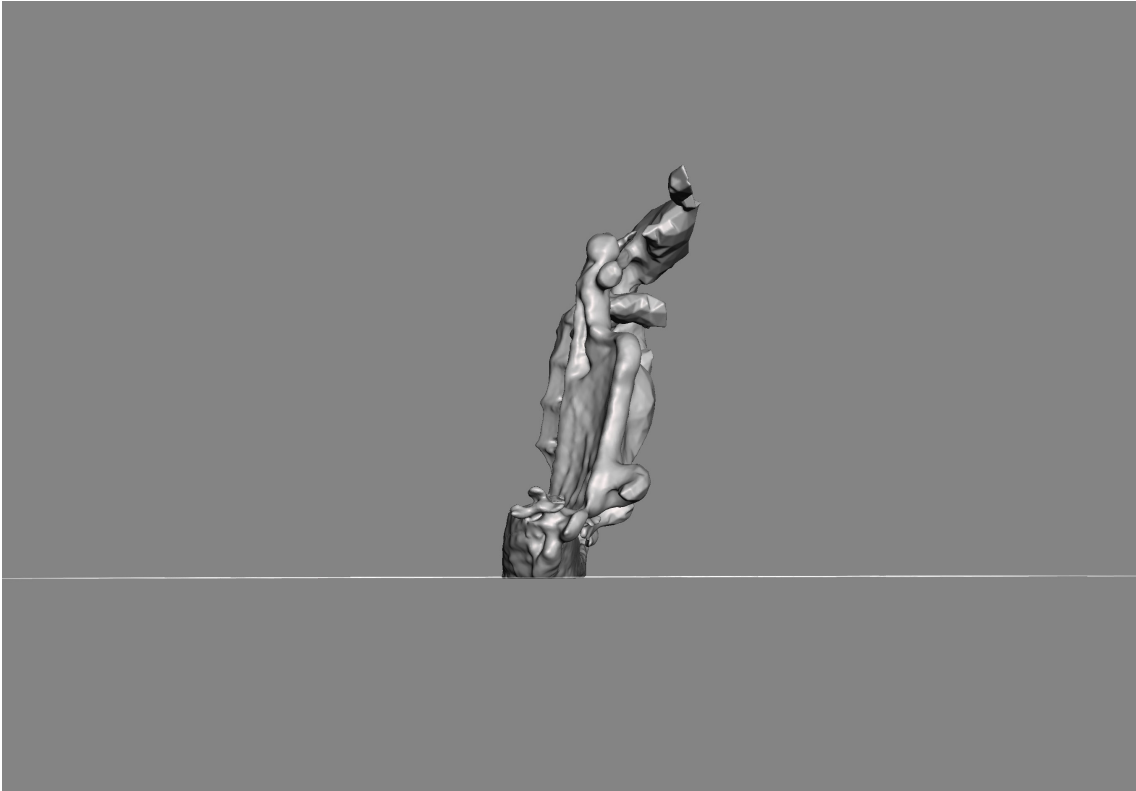
Subjective Heroism 07, 08, 09

Andrea Legge



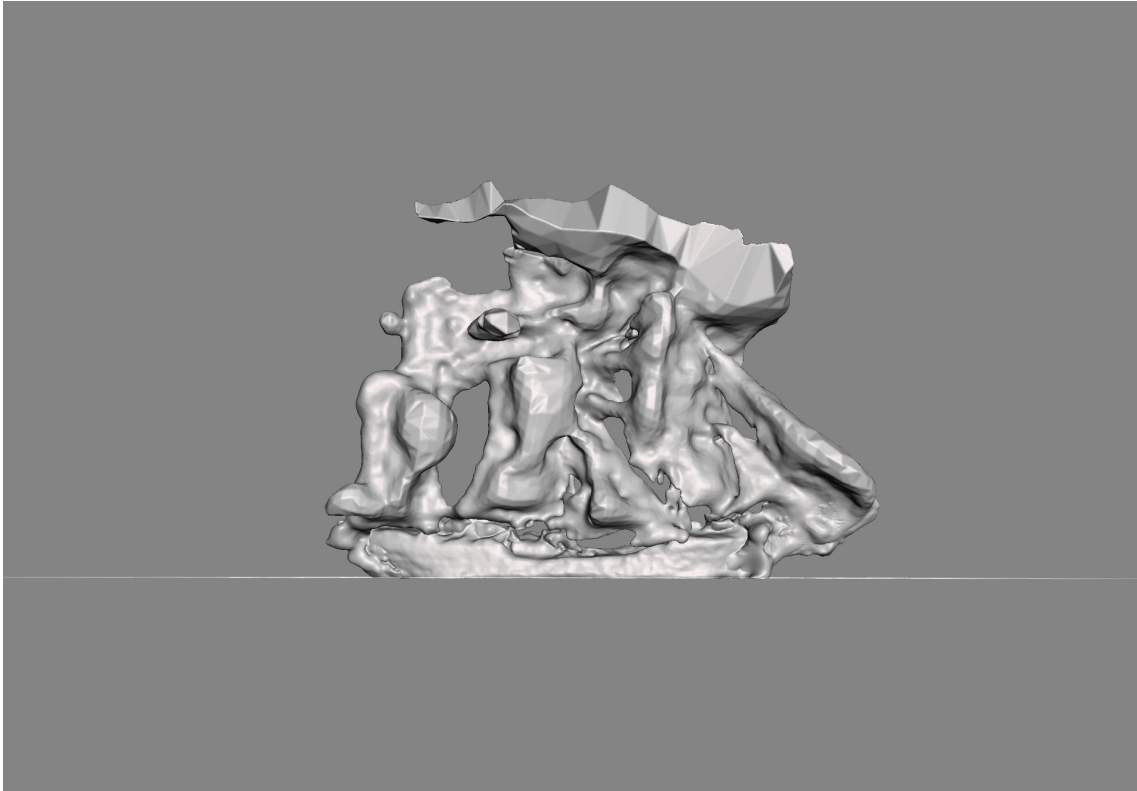
Subjective Heroism 07.

Photogrammetric final 3D model views of SV Antigua under sail interpreted by handheld iPhone and Agisoft Metashape. Created October 15, 2022, at Isafjorden, Templefjorden, Svalbard. Special thanks to The Arctic Circle Residency Program and The Canada Council for the Arts.



Subjective Heroism 08.

Photogrammetric final 3D model views of SV Antigua under sail interpreted by handheld iPhone and Agisoft Metashape. Created October 15, 2022, at Isafjorden, Templefjorden, Svalbard. Special thanks to The Arctic Circle Residency Program and The Canada Council for the Arts.



Subjective Heroism 09.

Photogrammetric final 3D model views of SV Antigua under sail interpreted by handheld iPhone and Agisoft Metashape. Created October 15, 2022, at Isafjorden, Templefjorden, Svalbard. Special thanks to The Arctic Circle Residency Program and The Canada Council for the Arts.

The author declares they have no competing interests.

Approaching Svalbard

Osceola Refetoff



Approaching Svalbard, Multispectral Exposure, 2022.

NOTE: Multispectral exposures are made with photographic equipment that is sensitive to both visual and infrared spectrums, creating vivid and otherworldly color combinations in camera using various archaic filters in front of the lens.

The author declares they have no competing interests.

